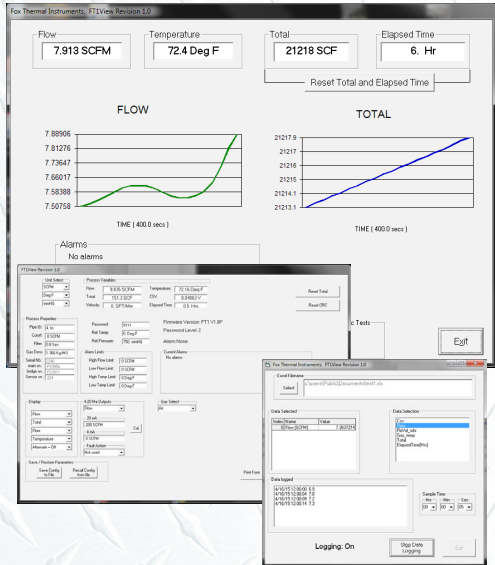




# FT1 View™ Software Tool

- Quick access to all configuration parameters with pop-up windows and pull down menus
- Selection of measurement units, flow and temperature ranges, alarm settings and more
- Gas-SelectX® Gas Calibration Menu
- Zero CAL-CHECK® Calibration Validation Certificate
- Data Logging to an Excel™ spreadsheet
- Display of alarm codes
- Storage of meter configurations to a file that can be archived
- View raw data that can be used to diagnose or troubleshoot your meter



399 Reservation Road  
Marina, CA 93933  
Phone: (831) 384-4300  
Fax: (831) 384-5786  
sales@foxthermalinstruments.com  
www.foxthermalinstruments.com

## Configuration and Data Logging Application

FT1 View™ is an intuitive, Windows® XP/7/8/10 compatible software tool that provides complete configuration and remote process monitoring functions for the Fox Model FT1 Thermal Gas Mass Flow Meter.

Communication via a Laptop or PC serial USB communications port lets you install and commission your flow meter quickly, no matter how complex your configuration needs. Once the instrument is up and running, FT1 View™ lets you adjust meter configuration, evaluate transmitter alarm conditions, collect process data, choose a gas calibration from a library of choices and view measurements from your Laptop, PC or control station.

## View Process Data from Your PC

The intuitive and easy-to-use FT1 View software gives process engineers and maintenance personnel a real-time view of process conditions.

The main window displays all of the flow meter's parameters and process variables on the screen. The FT1 readings are automatically refreshed every second.

## Quickly Configure and Adjust Flow Meter Settings

Clicking on the FT1 View "Configure" button opens a window that is used to configure the meter and to make adjustments to displays, outputs, alarm settings and flow totalizer.

- The "Display" section permits programming of lines 1 and 2 of the local display.
- The "4 to 20mA" section permits programming of the 4 to 20mA output for flow rate or temperature.
- "Digital Output Select" permits scaling of the digital output as an alarm indicator or a pulse output.
- The "Serial Com" button allows the user to configure the bus type.
- When FT1 View™ is used to initiate the Zero CAL-CHECK® test, a calibration validation certificate for the test can be generated

## Multiple Calibration Choices with Gas-SelectX®

Each Model FT1 flowmeter is pre-programmed with a list of calibration choices available through the advanced and easy-to-use Gas-SelectX® feature. Gas-SelectX® is a gas library where numerous pure gases are listed alongside a mixed gas menu.

For pure gases, the user selects quickly from the drop-down list of gases such as: Air, Argon, Butane, Carbon Dioxide, Helium, Hydrogen, Methane, Natural Gas, Nitrogen, Oxygen, and Propane. If a mixture is required, the user can create a custom mixture of any three of the pure gases available to suit their particular application needs.

## Simple, Easy-to-Use Data Logging Function

Saving process data to an Excel spreadsheet is initiated by selecting the "Data Logger" button from the main window. The Data Logger Window then prompts the user to choose from a list of available parameters such as flow rate, total, temperature, etc.

The user can also choose the sample interval time in hours, minutes, or seconds from easy-to-use drop-down menus. The user can enter a filename or choose a file path from a drop down menu in the Filename window.

This simple, easy-to-use data logging feature helps process engineers analyze flow parameters, evaluate transmitter alarm conditions, and develop charts and graphs for performance comparisons.