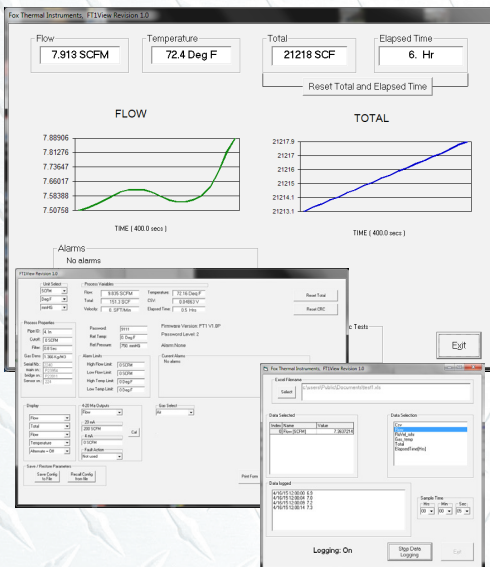




FT4X View™ Software Tool

- Quick access to all configuration parameters with pop-up windows and pull down menus
- Selection of measurement units, flow and temperature ranges, alarm settings and more
- Gas-SelectX® Gas Selection Menu
- CAL-V Calibration Validation Certificate
- Logs - 40 Daily Totals (24 hour totals)
- Data Logging to an Excel™ spreadsheet
- Display of alarm codes
- Storage of meter configurations to a file that can be archived
- View raw data that can be used to diagnose or troubleshoot your meter



399 Reservation Road
Marina, CA 93933
Phone: (831) 384-4300
Fax: (831) 384-5786
sales@foxthermalinstruments.com
www.foxthermalinstruments.com

Configuration and Data Logging Application

FT4X View™ is an intuitive, Windows® XP/7/8/10 compatible software tool that provides complete configuration and remote process monitoring functions for the Fox Model FT4X Thermal Gas Mass Flow Meter.

View Process Data from Your PC

Communication via a Laptop or PC serial USB communications port lets you commission your flow meter quickly, no matter how complex your configuration needs. The intuitive and easy-to-use FT4X View software gives process engineers and maintenance personnel a real-time view of process conditions. FT4X View™ lets you adjust meter configuration, evaluate transmitter alarm conditions, collect process data, choose a gas from a library of choices and view measurements from your Laptop, PC or control station.

Quickly Configure and Adjust Flow Meter Settings

The main window displays all of the flow meter's parameters and process variables on the screen. The FT4X readings are automatically refreshed every second. Clicking on the "Configure" button opens a window that is used to configure the meter and to make adjustments to displays, outputs, alarm settings and flow totalizer.

- The "Display" section permits programming of line 1 and line 2 of the local display.
- The "4-20mA" section permits scaling of the 4-20mA output for flow rate or temperature.
- "Digital Output Select" permits scaling of the digital output as an alarm indicator or a pulse output.
- The "Serial Com" button allows the user to configure the bus type.
- When FT4X View™ is used to initiate the CAL-V test, a pdf of a calibration validation certificate for the test can be generated, saved, and printed.

Multiple Gas Mix Choices with Expanded Gas-SelectX® Menus

Each Model FT4X flowmeter is pre-programmed with a list of gas and gas mix choices available through the advanced and easy-to-use Gas-SelectX® feature. Gas-SelectX® is a gas library where numerous pure gases are listed alongside the Mixed gas and Oil & Gas Mix menus.

For pure gases, the user selects quickly from the drop-down list of gases such as: Air, Argon, Butane, Carbon Dioxide, Helium, Hydrogen, Methane, Natural Gas, Nitrogen, Oxygen, and Propane. If a mixture is required, the user can create a custom mixture of any gases available in the gas menus to suit their particular application needs.

Simple, Easy-to-Use Data Logging Function

Saving process data to an Excel spreadsheet is initiated by selecting the "Data Log" button from the main window. The Data Logger Window then prompts the user to choose from a list of available parameters such as flow rate, total, temperature, etc.

The user can also choose the sample interval time in hours, minutes, or seconds from easy-to-use drop-down menus. The user can enter a filename or choose a file path from a drop down menu in the Filename window.

This simple, easy-to-use data logging feature helps process engineers analyze flow parameters, evaluate transmitter alarm conditions, and develop charts and graphs for performance comparisons.

Event & Alarm Logs, Logs for Configuration & CAL-V™ Test Data

Logs will display important information from 4 log menus: Event Log, 24 Hour Log, Config. Log, and CAL-V Log. The Event Log will show instances of alarms, power on/off of the meter, and changes to configuration of the meter's settings. The 24 Hour Log will list 40 24-hour totals beginning with the previous day. The Config. Log will show configuration data such as alarm limits, flow cutoff, and the gas/gas mix, gross heating value and density of the customer's selected gas/gas mix. The CAL-V Log takes the customer to the CAL-V calibration validation data for the meter.